

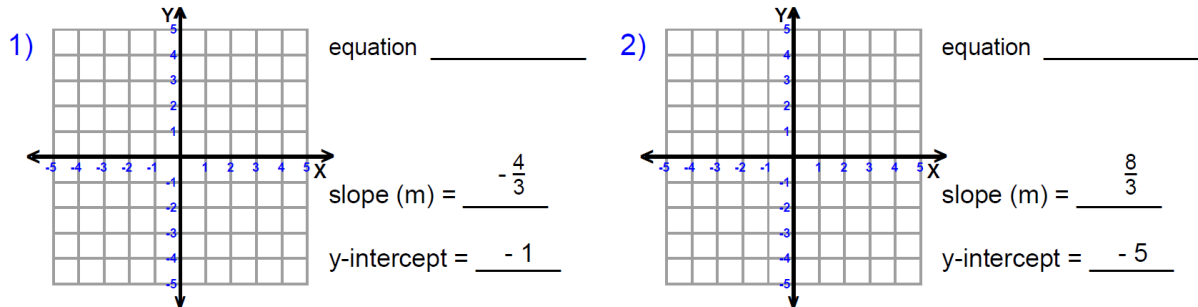
Linear Equations – Project

Name: _____

Date: _____ Period: _____

Due Thursday, 12/19/19. Will count as a classwork grade (worth 28 points).

Sketch Each Line and Write the Equation

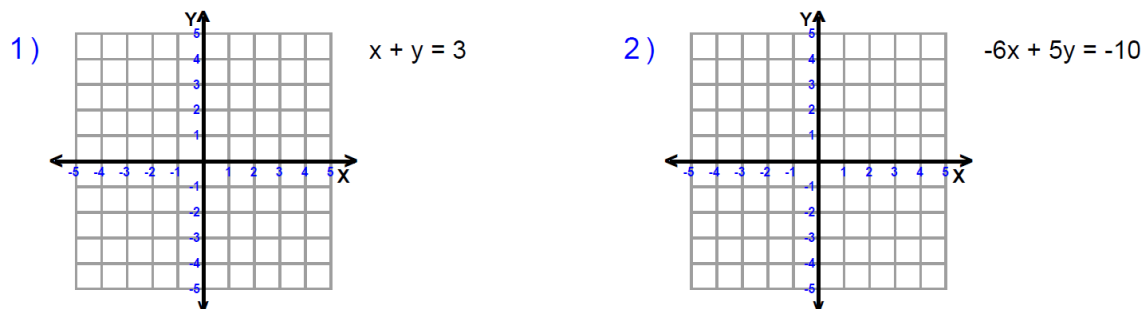


Find the Slope from the Pair of Points

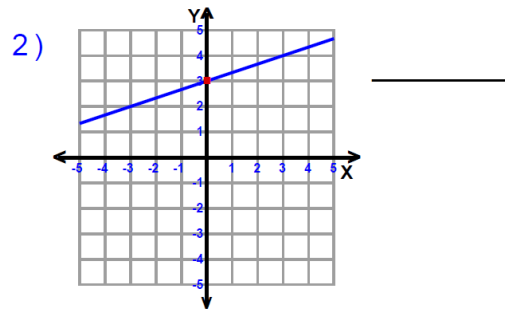
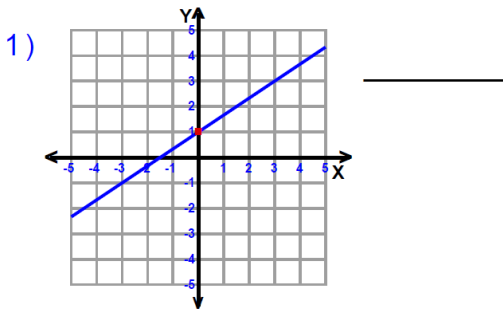
1) $(-5, 4)$ $(5, -5)$ slope = _____

2) $(3, -5)$ $(0, 5)$ slope = _____

Sketch the Graph of Each Line



Write the Equation from Each Line

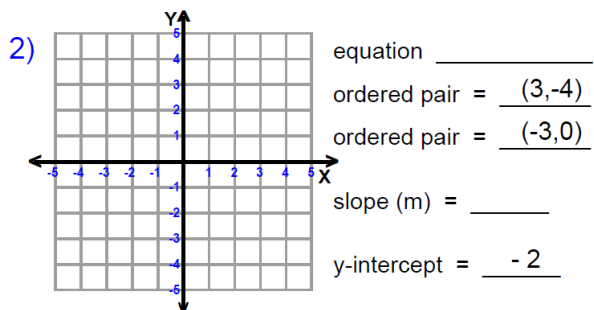
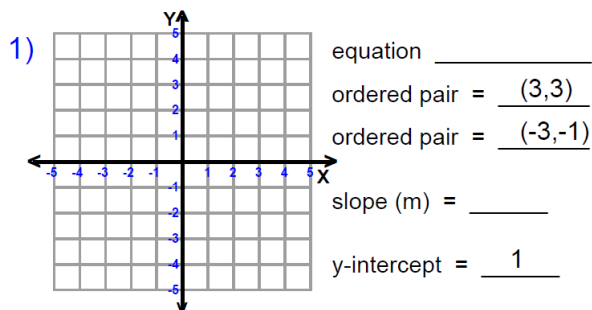


Find the Slope and Y-intercept for Each Equation

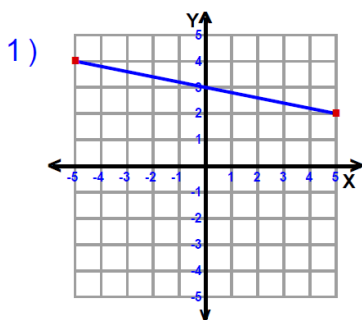
1) $-7x + 2y = 8$ slope = _____
y-intercept = _____

2) $4x + 3y = 3$ slope = _____
y-intercept = _____

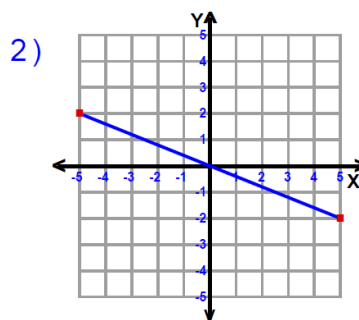
Sketch and Write the Equation For Each Line



Find the Slope of Each Line

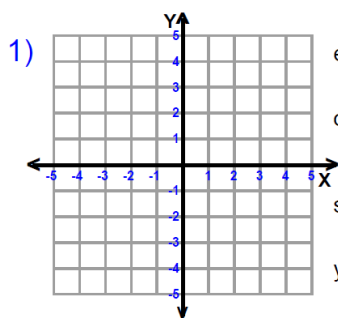


slope = _____



slope = _____

Sketch and Write the Equation For Each Line

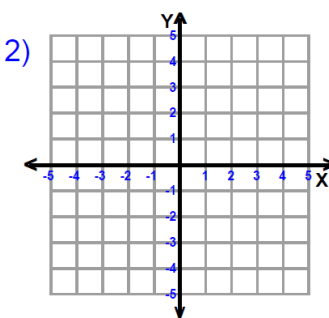


equation _____

ordered pair = (3, -4)

slope (m) = _____

y-intercept = 4



equation _____

ordered pair = (2, 4)

slope (m) = _____

y-intercept = -4